
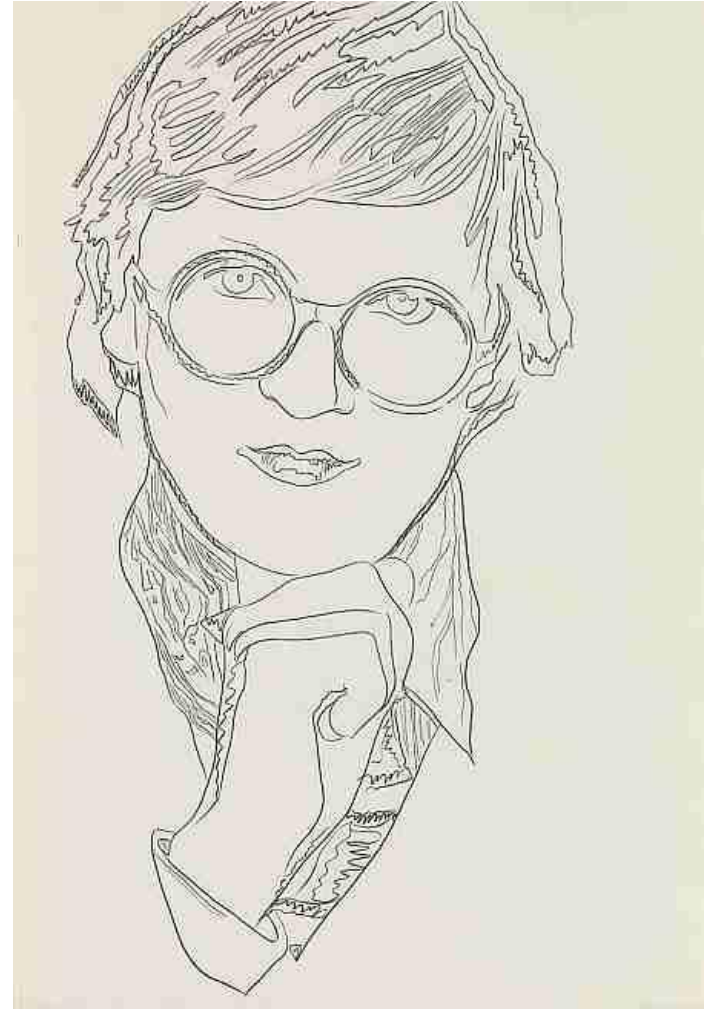
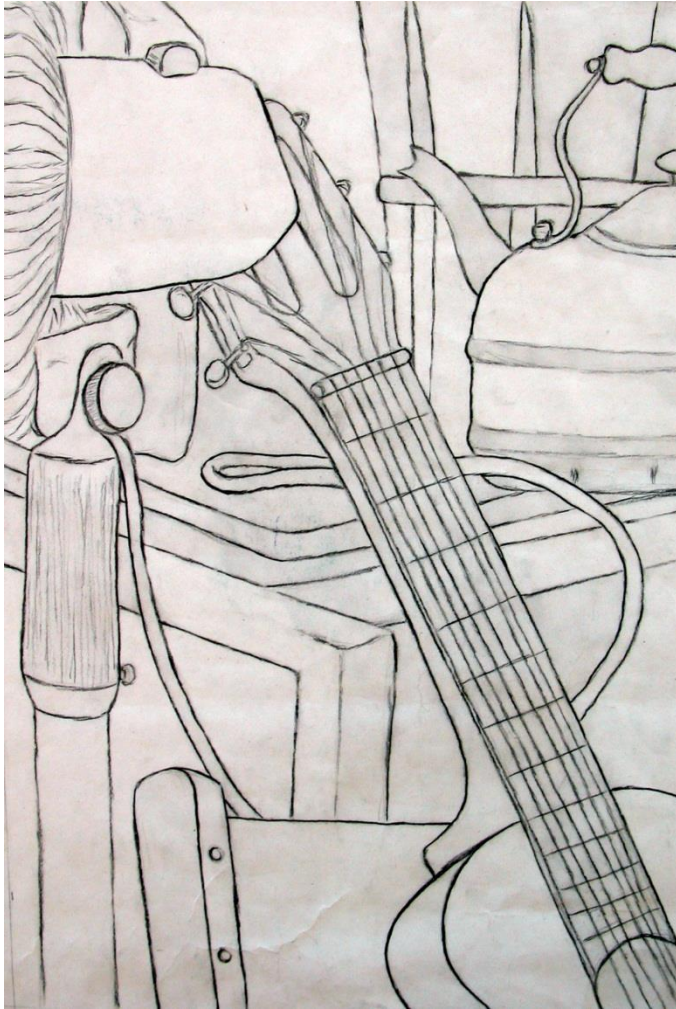


Observational Drawing

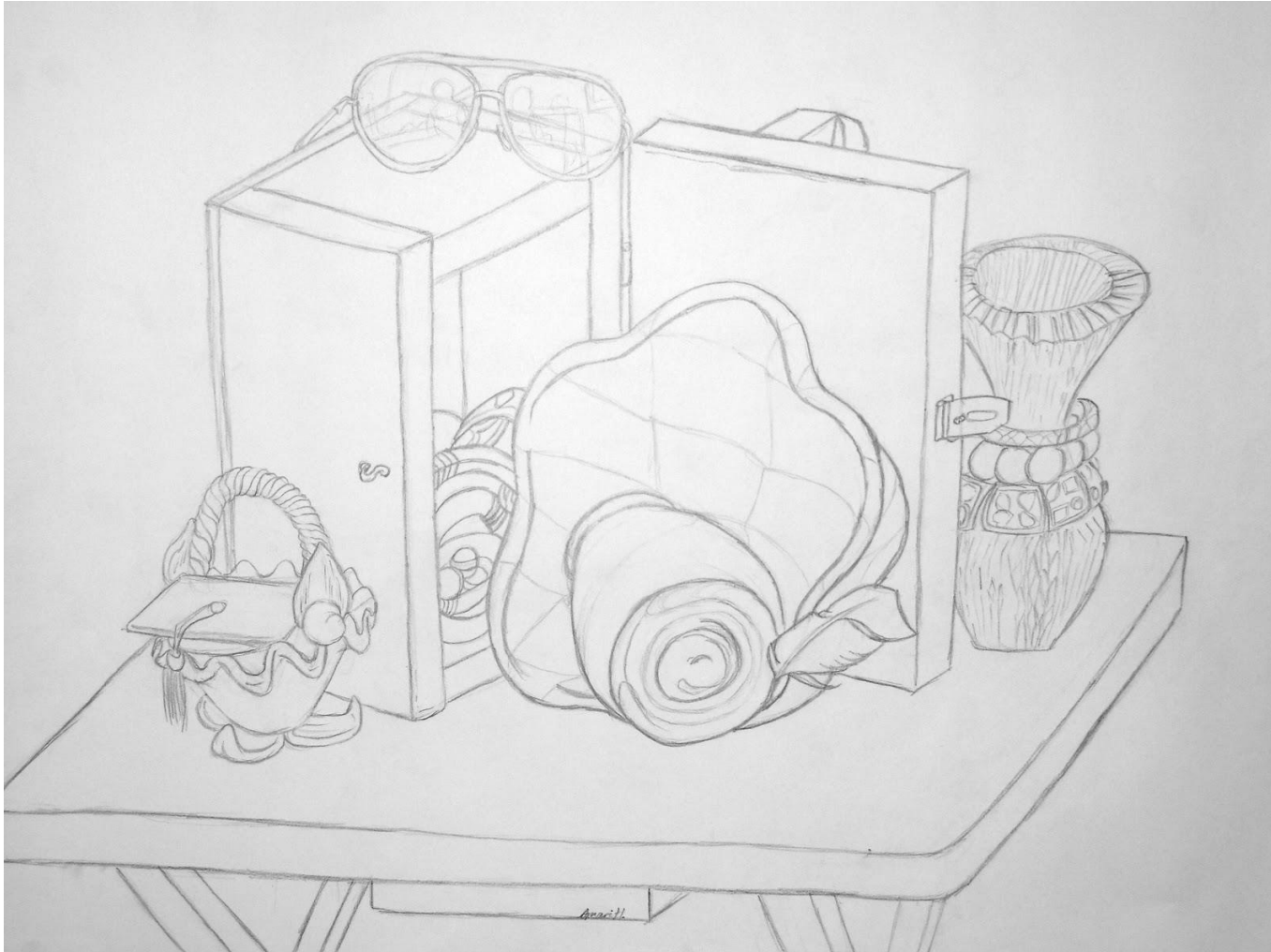
Line Drawing

-
- ▶ **LINE DRAWING** is a technique in which only the outline the subject being depicted is drawn.
 - ▶ In order to describe **FORM** and **PERSPECTIVE** the artist has to increase the pressure on the pencil to create darker/thicker lines for close up areas and decrease the pressure to achieve thinner/lighter lines for areas further away. This is called **SENSITIVITY OF LINE**.
-
- 

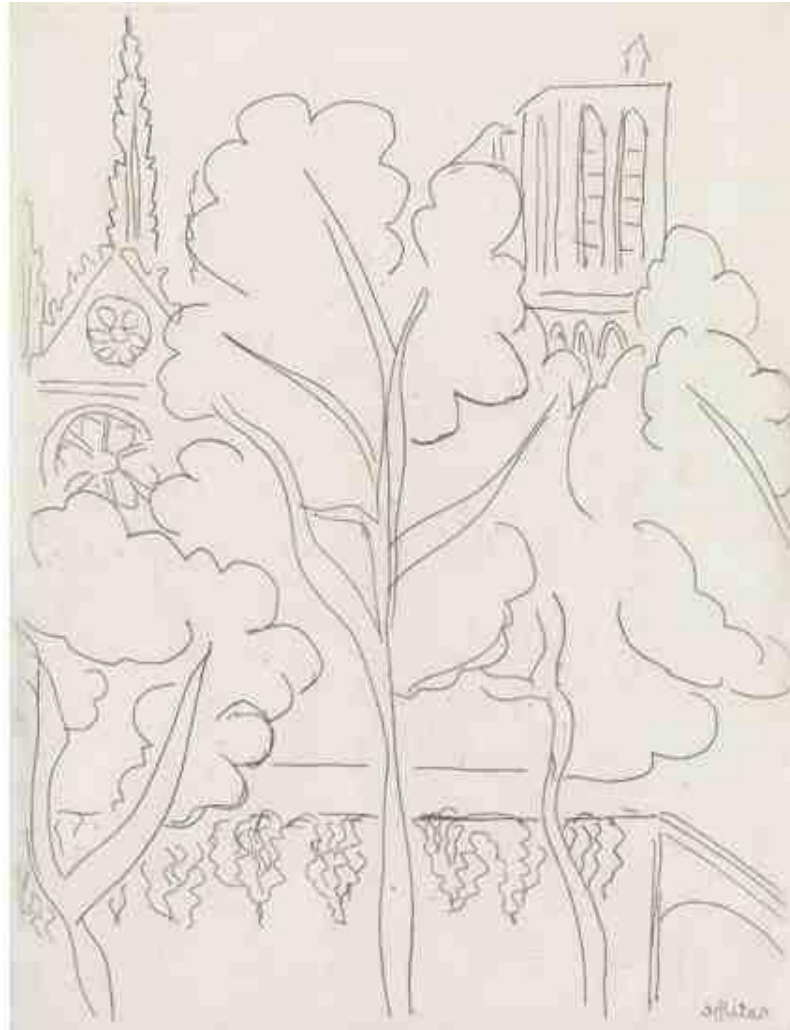
David Hockney



Still Life Arrangement



Henry Matisse



Richard Diebenkorn and Lucian Freud



Rembrandt and Van Gogh



More Examples

BICYCLE RIDER Pen & Ink Drawing Chuck Gardiner 1972

